

# WHERE'S WORCESTER?

Ask most people what makes Worcester distinctive and it's an easy answer – our 26 acres of award-winning gardens. When you're relaxing by the lake or having a picnic under the centuries-old trees, it's easy to forget that this green oasis is less than a 10-minute walk from the train station. And with the

University's libraries and departments only a short walk away too, it's hard to think of a better place to be a student in Oxford. Not forgetting the lively neighbourhood of Jericho on our doorstep, where you can make the most of the independent cinema, shops, bars and cafés which give this part of town a buzz.

With green spaces so important to us, we're working hard to champion sustainability and biodiversity. Our gardens support many species of birds and small mammals plus millions of invertebrates. We're also committed to making the whole college more sustainable – like printing this single sheet instead of our old 24-page prospectus.

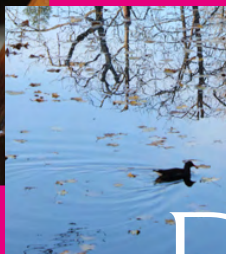
Head to our website to read more about our courses, tutors and research. Any questions? Just email our admissions team...

→ [www.worc.ox.ac.uk](http://www.worc.ox.ac.uk)  
admissions@worc.ox.ac.uk

📷 @worcestercollegeoxford

Worcester College Undergraduate Prospectus 2025  
Photos: Sam Allard, Olivia Bown-Mazzoni, Marcus Green, Charles Henderson, Nathan Stazickier & Paul Watson.

WORCESTER COLLEGE  
UNIVERSITY OF OXFORD



# DISCOVER A PLACE TO MAKE YOUR OWN

26 acres  
inside!

# WELCOME TO WORCESTER

At Worcester, you'll find a community which supports your academic success, gives you the space you need to flourish, and offers you a helping hand when you need it. We're the only college in Oxford to have sports pitches on site and we also excel in extra-curricular music and drama. And with accommodation for three years in College or just over the road, you're guaranteed to be able to make the most of our award-winning gardens – by the time graduation arrives most people are firm friends with our resident ducks!

As one of Oxford's most diverse colleges, we take equality of opportunity seriously and admit students with the most potential, whatever their background. Over the past three years, almost 86% of our UK students have come from state schools – the second highest intake in the University – and 30% have had Black, Asian and Minority Ethnic backgrounds.

We've been here since 1714 but some of our buildings were already hundreds of years old when we arrived. Plenty has changed over the last 300 years while some things have stayed the same. Whether its tradition or innovation you're after (or probably something in between), Worcester is a place you can make your own.

What do our students think? Find out in their Alternative Prospectus



65,000  
books in  
our libraries

750

bottles of apple juice pressed  
from our orchard each year



Holly

1ST-YEAR  
PSYCHOLOGY  
& LINGUISTICS

"My time so far at Worcester has been incredible – the novelty of living in such a beautiful place still hasn't worn off after a year! I've loved taking advantage of all the opportunities to get involved with the JCR and societies within College, as well as making use of the great facilities like the dance studio in the Sultan Nazrin Shah Centre. My tutors at Worcester are supportive and inspirational, making it easy to love my degree despite how challenging it can be."



a community  
of alumni in

99

countries around  
the world

20

accommodation  
buildings



3

tennis  
courts

and

1

lake!



450

undergraduate  
students



Leo

1ST-YEAR MATHS

"The best thing about Worcester is easily the community. From the moment I joined, everybody has been nothing but lovely, happily encouraging me to join social events, sports and societies. I truly believe there is something here for everyone – like ultimate frisbee, ice skating and rowing, three things I hadn't even considered before Worcester."

P.S. If you hadn't guessed, our College colour is pink...



# YOUR PLACE TO LIVE

- \* Three years of **guaranteed College accommodation** on site or less than 300m from the perimeter
- \* **20 buildings** to chose from spanning 7 centuries
- \* More than two thirds of our rooms have **en-suite** bathrooms
- \* Access to spacious **shared kitchens**

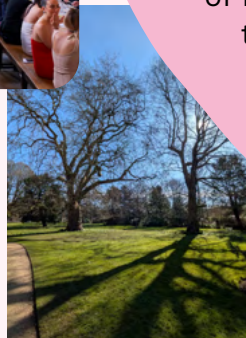
## HOW MUCH WILL IT COST?

We're committed to keeping rent and bills affordable at Worcester. Accommodation pricing is spread across 6 grades which reflect the facilities, size and age of different rooms. In 2024-2025, first-year rents at Worcester (including utilities) ranged from **£3,438** to **£5,813** for 184 nights.

Catering prices in 2024-2025 are:

**£4.10 café meal deal**  
**£4.35 lunch in Hall**  
**£4.99 regular dinner**  
**£14.50 formal dinner**

You can book events and track spending on our catering app.



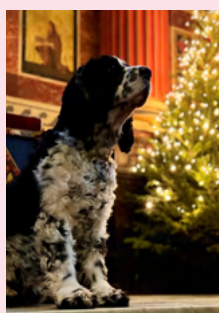
# YOUR PLACE TO THRIVE



- \* Professional **welfare lead** and a team of on-call graduate students to provide advice and support 24/7
- \* **College Nurse** providing on-site and remote appointments every weekday
- \* **Chaplain** always available for pastoral support (and walks with Harry the dog)

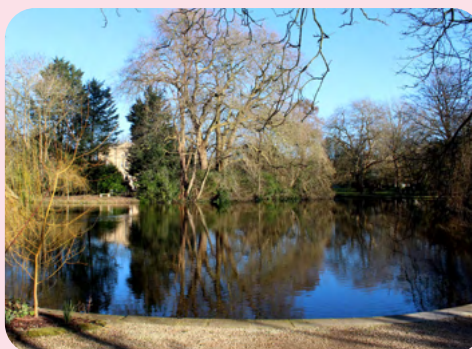
We firmly believe that no student should be unable to take up their place due to financial concerns. We offer **book bursaries** and **vacation study grants**, as well as grants and loans to provide **short-term support** with unforeseen financial difficulties. Our **prizes and scholarships** reward excellent academic work and the **Equal Access to Learning Fund** supports material access to learning through the means-tested purchase of things like laptops and books.

- \* Your **college tutor** supports both your academic and personal development
- \* **Learning Development Officer** to offer training and guidance on **study skills** and work to build an inclusive learning environment
- \* Equality & Diversity Fund to support **student projects** and initiatives



# A PLACE TO CALL HOME

Worcester is so much more than a collection of buildings. This is your place to learn and thrive; your place to make friendships and pursue passions that'll endure long after you've graduated. Find out why Worcester is the perfect home away from home.

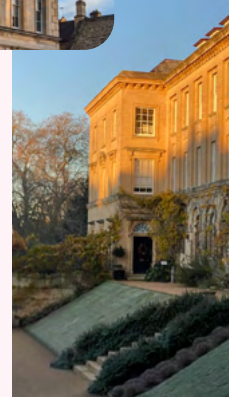
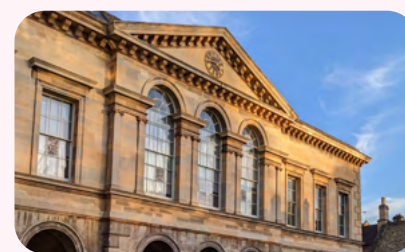


## WHAT'S FOR DINNER?

A typical weekly menu could include: **roast chicken & stuffing**, spicy bean chilli, **fish pie**, beef casserole with dumplings, **jerk-spiced jackfruit**, pulled pork wraps, and a **curry night** with tandoori chicken, saag paneer & mango rice pudding!

# YOUR PLACE TO LEARN

- \* Work in the **historic lower library** for a great view of College or head to the upper library to browse the modern collection
- \* Separate **law library** open to all students
- \* **24-hour** library facilities in College
- \* Around **700 new volumes** purchased each year
- \* **Special collections** of international significance



# YOUR PLACE TO BELONG

- \* Buskins **drama society** and a century-old tradition of summer **garden plays**
- \* Inclusive **sports teams** with regular training and socials for everything from football to frisbee
- \* On-site **sports pitches, gym** and 3 hard **tennis courts** plus a **boat house** on the river
- \* Student-run **music society** with regular concerts, an **orchestra** and an inclusive community choir for all
- \* Amazing **choir** offering scholarships in all voice parts and international tours
- \* Unique **instrumental scheme** providing free music lessons and instrument hire
- \* Multi-faith **prayer room** for individual and group reflection with adjacent washrooms
- \* Purpose-built **dance studio** beside the lake