

CHAPEL



Worcester College
Oxford

Fire Safety

General Emergency Evacuation Plan

CHAPEL



CHAPEL



Worcester College
Oxford

Fire Safety

General Emergency Evacuation Plan

CHAPEL

The purpose of a **Generic Emergency Evacuation Plan (GEEP)** is to enable visitors to the building with restricted mobility or those who may not be able to evacuate unaided to become familiar with the layout, evacuation procedures, available equipment and communication devices. If you feel that this document does not provide you with sufficient information or that you require further assistance, please contact the Worcester College Porters Lodge on 01865 278300.

The building:

The Chapel comprised of one level, it has 1 Fire Exit which is the large main door that you enter/exit from. Outside the Chapel entrance there is a wooden constructed ramp/steps which leads you from the cloister floor level to the Chapel entrance. The cloister floor is off stone slabs and to the south end leads to stone steps down to the lower level which faces archway 12.

Building Occupancy Number: 100 Persons.

Action required on hearing the Fire Alarm:

If able, you should leave the building immediately by the main door fire exit (see attached floorplan) and report to the assigned assembly point for the building. The Chaplain, Director of Music, The Lead Sacristan or Lodge Porters will direct all of the congregation to leave through the Main entrance door and make your way to the Fire Assembly Point.

Persons to the building that require the use of wheelchairs or that have significant Visual, Hearing or Cognitive impairments and who have a permanent or temporary Personal Emergency Evacuation Plan (PEEP's) should make themselves known to the Chaplain, Director of Music or Lead Sacristan so that specific assistance can be provided. The Fire Assembly point will be the front of college which is of the same level as the cloisters.

Other recommendations:

Not all fire escapes are accessible by wheelchair and visitors to Worcester College should familiarise themselves with the fire alarm signals and floor layout of the building they are in. Floor plans and evacuation equipment locations have been provided within this document.



Worcester College
Oxford

Fire Safety General Emergency Evacuation Plan

Fire Safety Information



Fire Action Notices can be found in any area within the College and stipulate action in the event of discovering a fire or in the event of the fire alarm sounding in the building.

Please familiarise yourself with the instructions stated in the notice and Assembly point location & comply in the event of a fire or fire alarm.

In the event of a fire the Lodge will manage the incident. If you see a Fire please notify the Lodge on **01865 278300** and allow the Lodge to manage



Fire Doors are designed to protect escape routes within buildings and limit the growth of a fire. Any door labelled with one of the above signs will resist a fire for a minimum of 30 minutes.

Please ensure that you do not prevent any door with this label from shutting and if you find a door that does not shut then please report it to a member of staff



To maintain security and safety on site, many doors are secured with magnetic locks that only release when the correct key card is used or when the fire alarm activates.

Should you come to a fire escape route door that appears to be locked (or has not released correctly) there will be a green break glass unit nearby which will release the door.

Push the plastic window in to operate the lock override.



The fire alarm systems in all of our buildings rely on smoke and heat detectors in much the same way as any system that you might have at home.

Our buildings are far more complex than domestic premises therefore we include the additional measure of Fire Alarm Call Points which will trigger the fire alarm system in a building.

If you see fire, ensure your own safety first and if possible activate a call point by pushing the plastic window



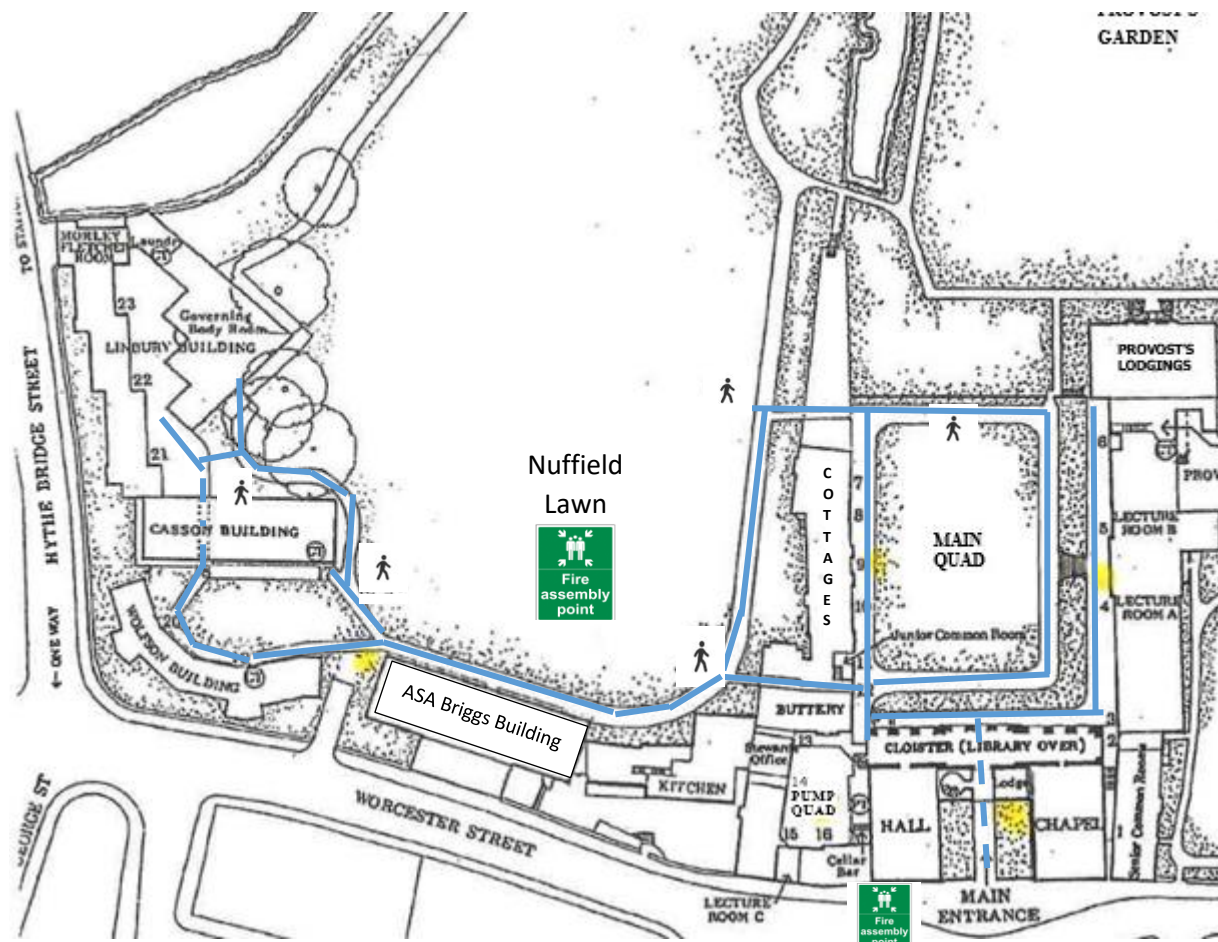
Worcester College
Oxford

Fire Safety

General Emergency Evacuation Plan

CHAPEL

Assembly Point



KEY:



NUFFIELD LAWN (via Stone Steps)



FRONT OF COLLEGE



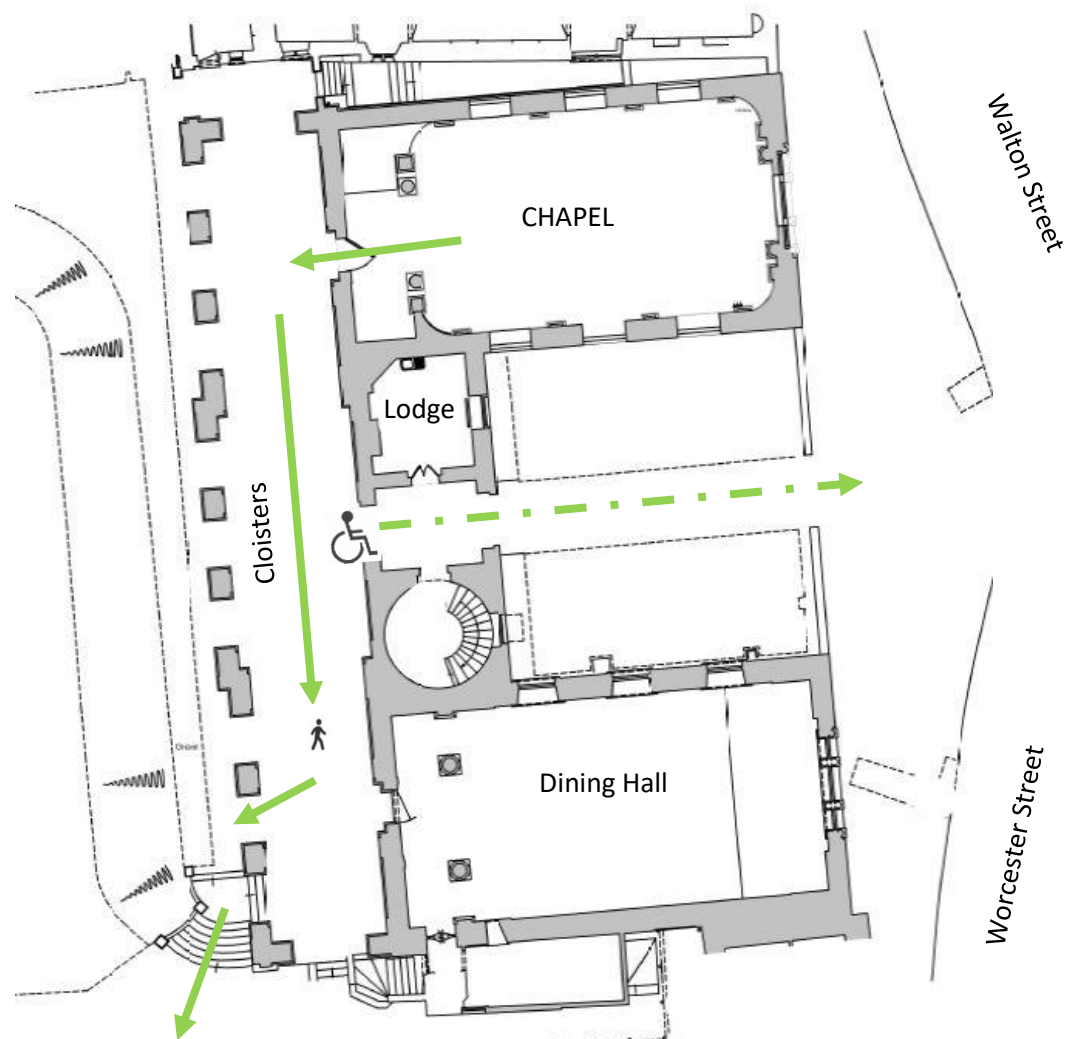


Worcester College
Oxford

Fire Safety

General Emergency Evacuation Plan

CHAPEL



Walk through ARCWAY 12

KEY:  Safe Route 